

The Mineral fx collection of micro-granite vinyl sheet floorcoverings is specifically designed for a wide range of commercial interiors. The contemporary and creative non-directional designs are ideal for education, healthcare, office, retail and leisure sectors, presented in a practical, resilient and hygienic product construction.

Developed as a complementary product to the established Forest fx collection of wood designs, Mineral fx features a sophisticated micro-granite decoration in a palette of natural tones and bold colourways, meeting today's interior design trends.

The durability of Mineral fx lends itself perfectly to the demands of commercial interiors, leading with the key advantages of

aesthetics and performance, with the added flexibility to meet corporate design schemes. Unique floor designs can easily be achieved by incorporating inlaid features and logos, managed by Polyflor's in house design team.

To further enhance the floorcovering, Mineral fx features a high quality, cross-linked polyurethane reinforcement (PUR) providing a low cost, polish-free maintenance regime for the lifetime of the product.

Mineral fx is 100% recyclable and achieves a generic BRE A+ certification for major use areas based on a life cycle analysis approach over a building life of 60 years, making the collection environmentally preferable which meets decorative, practical, budgetary and maintenance objectives.

Specifications	Standards	Mineral fx
Type of Floorcovering	EN 649	Heterogeneous
Product Enhancement		PUR
Gauge	EN 428	2.0mm
Wear Layer	EN 429	0.7mm
Performance Classification	EN 685	23, 34, 43
Roll Size	EN 427	2m x 20m = 40m ²
Total Weight	EN 430	2,700g/m ²
Residual Indentation	EN 433	≤ 0.1mm
Abrasion Resistance	EN 649	Group T
Dimensional Stability	EN 434	≤ 0.40%
Behaviour to Fire	EN 13501-1	Bfl-S1
Slip Resistance	DIN 51130	R9
	EN 13893	DS (Dry Slip)
Light Fastness	ISO 1056-B02(Method3)	≥ 6
Resistance to Chemicals	EN 423 (ASTM F 1303-99)	Excellent
Underfloor Heating Suitability		Suitable, Max 27°C
Castor Chair Suitability	EN 425	Yes, type W, EN 12 529
VOC Test	AgBB	Low Emissions
Electrical Behaviour (body voltage)	EN1815	This product does not accumulate static charges above 2kV and is classified as 'antistatic'. For specialist applications where there is requirement to dissipate the electrostatic charge, see the Polyflor ESD product range.
Hygiene		This product has been independently tested and results demonstrate that it inhibits the growth of MRSA. An effective cleaning regime is however, the most important defence against infection.
Environmentally Preferable Flooring		Polyflor Mineral fx PUR achieves a Generic BRE Global Environmental A+ Rating in major use areas such as education and healthcare. Polyflor Mineral fx PUR is 100% recyclable. A full Environmental Report detailing Polyflor's achievements in areas such as recycling, energy reduction and waste avoidance can be found at www.polyflor.com/environment .



FalckDesign AB
Energigatan 9, SE-434 23 Kungsbacka,
Sweden
Tel: +46 (0) 300 15820
E-mail: info@falckdesign.com

objectflor Art und Design Belags GmbH
Wankelstraße 50, 50996 Köln, Germany
Tel: +49 (0) 2236 966 330
E-mail: info@objectflor.de

Polyflor Australia Pty Ltd
59-65 Wedgwood Road, Hallam,
Vic 3803, Australia
Tel: 1800 777 425
E-mail: sales@polyflor.com.au

James Halstead Flooring New Zealand Ltd
100 Plunket Ave, Manukau 2104
New Zealand
PH: 0800 425 783
E-mail: sales@polyflor.co.nz

Polyflor Canada
304 Stone Road West, Suite 550
Guelph, Ontario, N1G 4W4 Canada
Tel: +1 519 763 3088
E-mail: acrawford@polyflor.ca

Polyflor Contract Ltd
Office 12, Business centre "Strela",
d. 113, liter B, Ligovsky pr., St.Petersburg,
Russia.
Tel: +7 812 332 42 02
E-mail: sales@polyflor.ru

Polyflor Hong Kong
Room 2409, 24th Floor,
New York Life Tower, Windsor House,
311 Gloucester Road,
Causeway Bay, Hong Kong
Tel: +852 2865 0101
E-mail: anthonylam@polyflor.com.hk

Polyflor Ireland
Unit 106, Millennium Trade Park,
Ballycoolin, Blanchardstown, Dublin 11
Tel: +353 (1) 864 9304
E-mail: tmockler@polyflor.com

Polyflor Middle East
PO Box 71862, Dubai, UAE
Tel: +971 4 349 1078
E-mail: espm@eim.ae

Polyflor Nordic
Kjelsåsveien 168 B, N-0884 Oslo,
Norway
Tel: +47 23 00 84 00
E-mail: firmapost@polyflor.no

Polyflor Polska
Ul Gronowa 22/506, Poznań 61-680,
Poland
Tel: +48 61 820 3155
E-mail: polyflor@polyflor.com.pl

Poly Sales Africa (Pty.) Ltd
PO Box 3967, Edenvale 1610,
South Africa
Tel: (27) 11 609-3500
E-mail: info@polyflor.co.za



POLYFLOR LTD. PO BOX 3 RADCLIFFE NEW ROAD WHITEFIELD MANCHESTER M45 7NR UK
UK SALES DIRECT: +44 (0)161 767 1122 UK SAMPLE REQUESTS: +44 (0)161 767 2551
EXPORT SALES DIRECT: +44 (0)161 767 1913 TECHNICAL SUPPORT: +44 (0)161 767 1912
RECEPTION: +44 (0)161 767 1111 UK FAX: +44 (0)161 767 1128
EXPORT FAX: +44 (0)161 767 1166 E-MAIL: INFO@POLYFLOR.COM
WEBSITE: WWW.POLYFLOR.COM



LIT 216 06/11



new



Mineral fx™

Stone effect sheet vinyl flooring



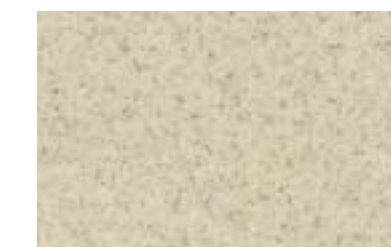
Front cover: 9803, 9808 and 9812



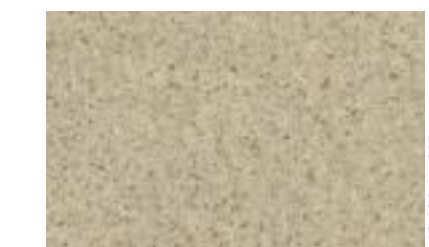
9801 and 9802

Mineral fx represents the natural beauty and sophistication of stone and mineral composites in a practical, durable and hygienic vinyl sheet format. This contemporary and expressive colour palette incorporates classic natural tones along with brighter accents to assist in creating a unique flooring installation.

Mineral fx™



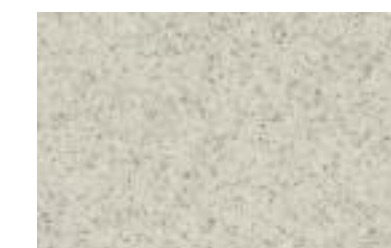
9800 Sliica Sand* w/r 9800



9801 Mica Sand* w/r 9801



9802 Earth* w/r 9802



9803 Mercury* w/r 9803



9804 Zinc* w/r 9804



9805 Onyx* w/r 9805



9806 Celestine Blue* w/r 9806



9807 Flint w/r 9807



9808 Lazulite Blue* w/r 9808



9809 Euclase Green* w/r 9809



9810 Olivene Green w/r 9810



9811 Topaz w/r 9811



9812 Amber w/r 9812



9813 Corundum Red w/r 9813

The closest perceived NCS - Natural Colour System references are quoted for your convenience. For more information see www.ncscolour.com

* Acoustic variants of these products are also available if impact sound reduction is required. See Acoustix Gallery fx collection.

Subject to change for reasons of further technical development. The collection images are only photographic reproductions of the respective products and show only a small area. Variation in colour and design is a feature of these products intended to enhance the natural appearance of the floor. With regard to colour printing of the photographic images, it is only possible to give a provisional representation of the colour. For colour selection, an original sample should be used which we shall be pleased to send by return.

POLYFLOR™
COVERING THE WORLD